

Chiba Update

Chiba MICE Newsletter



No.003

Oyama Senmaida

Narita Gion Festival

The Narita Gion Festival is a very popular festival in Chiba which runs over 300 years, where ten traditionally decorated dashi or floats are paraded around the charming street lined with restaurants and shops, the popular Omotesando Street of Narita City. During the event, traditional music and dance performances were held which add to the excitement during the day. At nighttime, the floats are beautifully lit up which bring another excitement and atmosphere. The 3-day long festival draw approximately half-million visitors each year.

The Narita Gion Festival is a very popular festival in Chiba that has run for over 300 years. About ten traditionally decorated floats are paraded around the charming street lined with restaurants and shops in Narita City known as Omotesando. During the event, traditional music and dance performances were held, and at night, the floats are beautifully lit up, which adds to the excitement and festive atmosphere. The 3-day-long festival draws approximately half a million visitors each year.

This year, it was held on July 5 to July 7, 2024.

Visit the [Narita Gion Festival](#) for more information.



What's in Chiba City?

The prefecture's capital

Located approximately halfway between the air gateways of Japan, Narita International Airport and Haneda Airport, Chiba City has excellent transportation access; it takes less than 30 minutes to arrive to either airport, as well as the nation's capital city, Tokyo. As prefectural capital, it is a large, developing city that plays a large role in capital functions.

One of the districts in Chiba City is the Makuhari New City. A district being designated as a national strategic special zone, - a futuristic city where Japanese and foreign people can interact and new industries are created through the accumulation of a variety of futuristic technology and state-of-the-art research institutes, such as drone delivery demonstrations, ICT use in medical care, and self-driving system.

Located in the heart of Makuhari New City district is Japan's premier and one of the biggest convention complexes in Asia, consists of 3 major facilities, the International Exhibition Hall, the International Conference Hall, and the Makuhari Event Hall, Makuhari Messe.

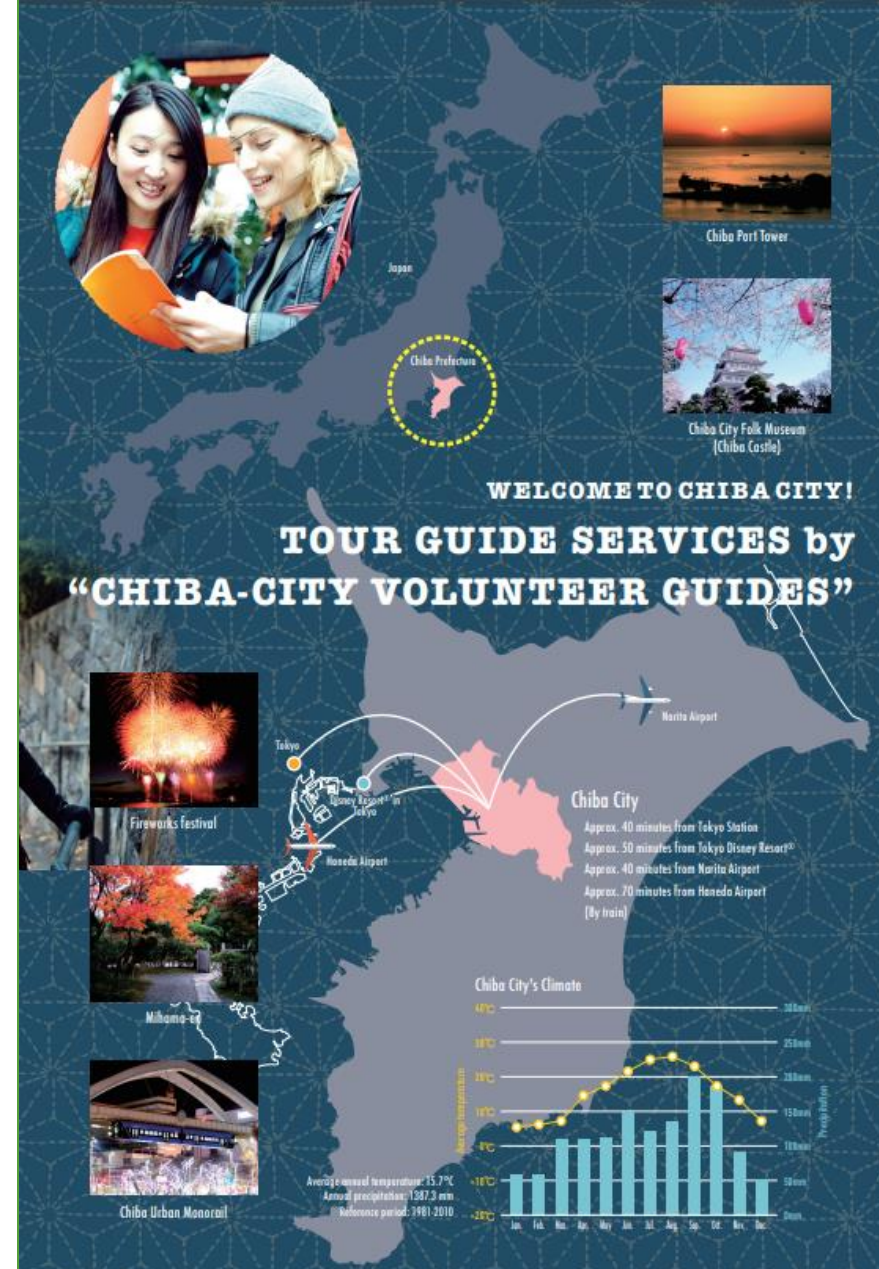


Situated on a site of 210,000 square meters wide and with 7 sophisticated hotels either connected or within walking distance, Makuhari Messe is home to many international events such as sport competitions, concerts, exhibition, conventions, and alike. It is also the venue for some of the sporting competition during the Tokyo Olympic and Paralympic Games.

There are various facilities in the city that offers unique experience for group gatherings also known as 'unique venue'. These venues are suitable for gala parties and receptions, and ceremonies. Among those are the world's longest suspension monorail, Japanese garden, museum, castle, and more.

Visit the [Tour Guide Services by Chiba City Volunteer Guides](#) for guided course and services.

For recommended courses for group tours, visit [here](#) for details.



Courtesy of Chiba City Volunteers
Chiba City homepage

2024 Chiba Summer Beach Guide: Onjuku and Katsuura

Chiba is surrounded by the sea and blessed with rich natural resources including the water and forests. It is located on the eastern side of the Tokyo metropolitan area, and occupies a peninsula that juts out into the Pacific Ocean. The southeastern part of the peninsula faces the Pacific Ocean, while the western side faces Tokyo Bay.

Being surrounded by water on the 3 sides, Chiba enjoys a warm oceanic climate that is mild in winter and relatively cool in summer. It has plenty of beaches in which various recreation activities that can be enjoyed all-year-round.

Chiba is also the venue for the surfing competition during the 2020 Olympic and Paralympic Games.

Check out the Chiba Prefectural Tourism & Local Products Association's '[2024 Chiba Summer Beach Guide: Onjuku and Katsuura](#)' for some beach listing in the prefecture.



Small planet CAMP & GRILL

A party concept for groups

Are you looking for a reception venue for a party or reception that is away from the hustle and bustle of the city but still a few steps away from the metropolitan area? Lying in Inage Seaside Park and facing Tokyo Bay is a glamping facility called 'small planet CAMP & GRILL'. It's a glamping facility showcasing 16 air-conditioned tents located in a sophisticated park and only a few steps away from the beautiful beach with a view of the Tokyo metropolitan area. Here, you can enjoy barbecue plans and fresh ingredients from nearby oceans and farms.

The forest area serves as a venue for reception dinners, parties, and alike. Since the theme of the area is 'forest', even though it is facing a white sand beach, the air coming from the ocean is filtered by tall trees surrounding it, making the area cool even in the hot summer time.

This open-air venue accommodates up to 100 people (standing). Click ['small planet CAMP & GRILL \(Japanese only\)](#) for more details.



Chiba Convention Bureau to participate in various tradeshow

The Chiba Convention Bureau is dedicated to reaching out to various event organizers worldwide through various means, which include international tradeshow. Below are tradeshow in which CCB is participating. We will be happy to connect with you in person regarding our destination and other related services.

Schedule

IMEX	Frankfurt	May 14 to 16
JNTO Incentive Seminar	Taiwan	September 5
Visit Japan Travel Mart and MICE Mart	Tokyo	September 26 to 28
JNTO Incentive Seminar	Ho Chi Minh	November 7
IBTM	Barcelona	November 19 to 21
JNTO Incentive Seminar	Kuala Lumpur	December 10
JNTO Incentive Seminar	Bangkok	December 12
JNTO Incentive Seminar	Manila	January 22
IME 2024	Tokyo	February



Chiba Convention Bureau and International Center

14F Makuhari Techno Garden Building D

1-3 Nakase, Mihama-ku, Chiba City, Chiba Prefecture 261-8501 Japan

Tel: +81-43-297-2752 Fax: +81-43-297-2753

Homepage: <http://www.ccb.or.jp/mice/e/> Email: chibainfo@ccb.or.jp