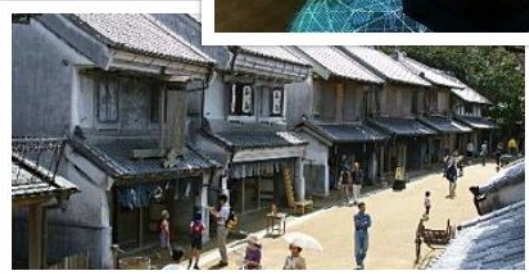
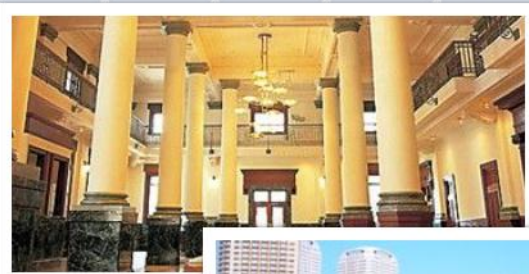




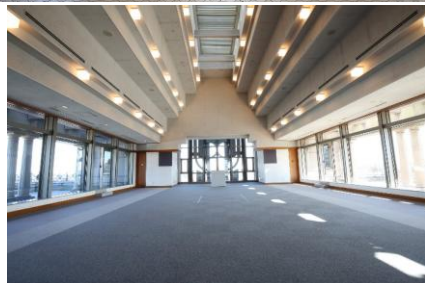
Chiba Japan
Convenient Conventions

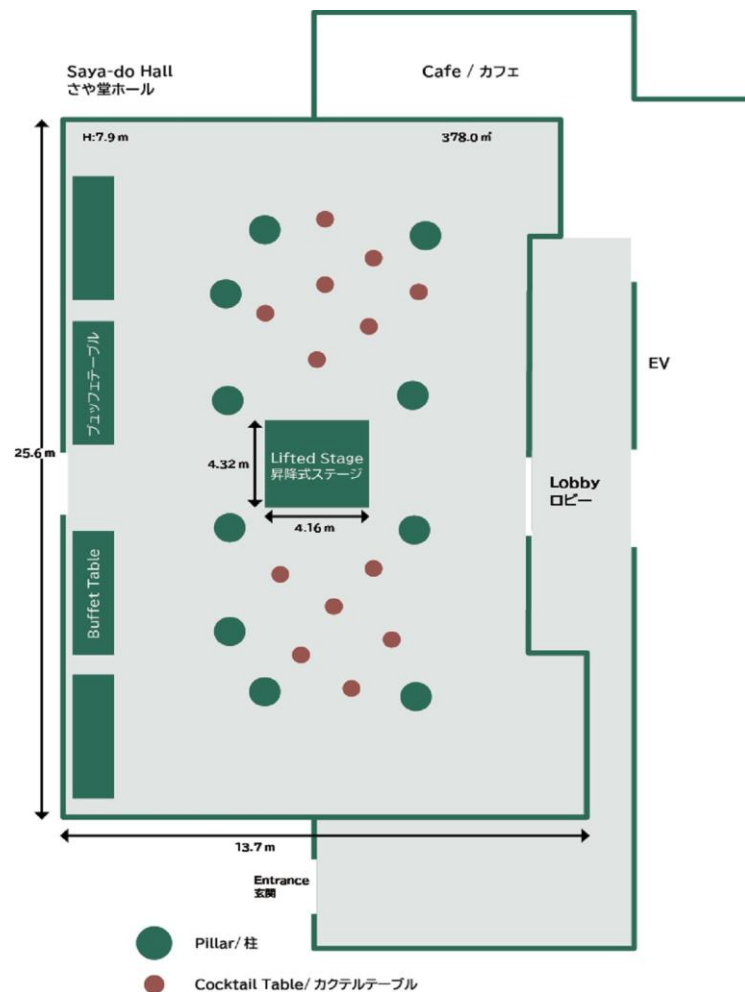
UNIQUE VENUES



Chiba City Museum of Art

The interior of this unique museum preserves a neo-Renaissance-style building built as a bank before World War II. Following expansion work, the museum reopened on July 11, 2020 with additional facilities to attract a broader range of age groups, as well as existing galleries used for planned exhibitions. You can enjoy not only a permanent exhibition that showcases highlights of a collection of around 10,000 artworks, including Ukiyo-e, modern and contemporary Japanese paintings and prints, contemporary art, and pieces related to the Boso region, but also interactive projects in which visitors can participate alongside artists.



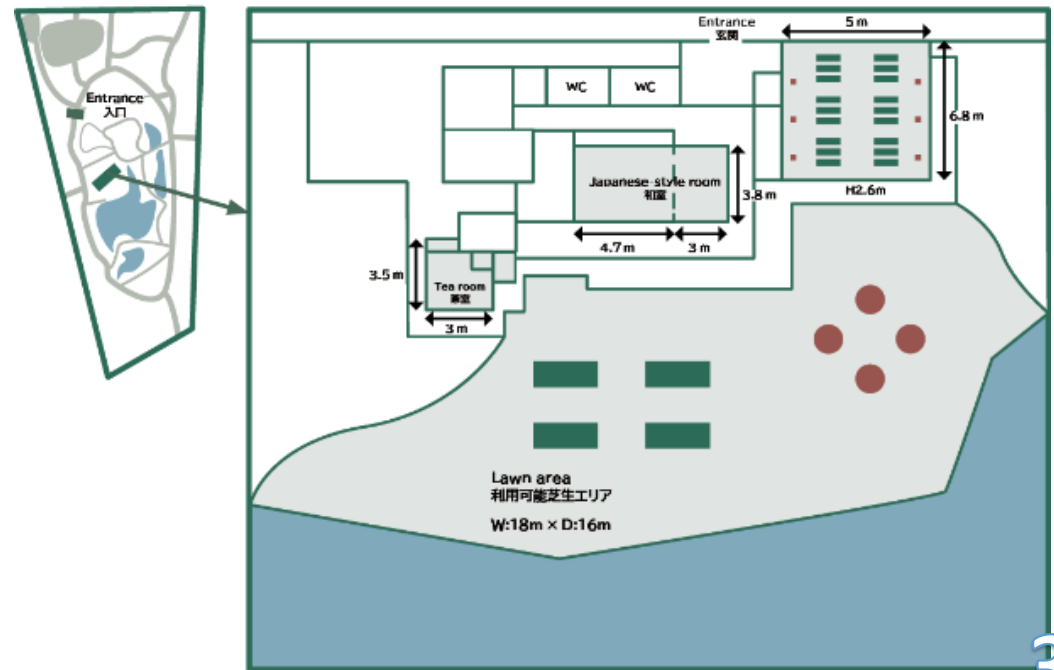


Address	3-10-8 Chuo, Chuo-ku, Chiba City 260-0013
Access	<p>To get to JR Chiba Station from the JR Tokyo Station, take the Sobu Line rapid train bound for Chiba, about 40 minutes</p> <p>From JR Chiba Station East Entrance, walk for about 15 minutes; take the Keisei Bus (bus station No. 7) bound for Daigaku Byoin or for Minami-yahagi, get off at the Chuo 3-chome or Yamatobashi bus stop, and walk for about 3 minutes; or take the Chiba Urban Monorail bound for Kencho-mae, get off at Yoshikawa Koen Station, and walk for about 5 minutes</p> <p>From Keisei Chiba Chuo Station East Entrance, walk for about 10 minutes.</p>
Website URL	https://www.ccma-net.jp/
Hours	10:00-18:00 (20:00 on Fridays and Saturdays) Closed on first Monday of the month and year-end and New Year holidays (Dec. 29 to Jan. 3)
Facility outline	<p>Site area: 2,572.4 m²; building area: 1859.7 m²; total floor area: 17,548.9 m²</p> <p>Scale: 3 underground and 12 aboveground floors, 1-story tower</p> <p>Construction: steel-framed reinforced concrete (1st to 2nd underground floors), reinforced concrete (3rd underground floor), steel-framed (1st to 12th aboveground floors, tower)</p>
Available area (m ²) / Capacity	Lecture Hall (180.0 m ²); Study Room (73.0 m ²); Studio (211.73 m ²); Workshops (177.55 m ²); Sayado Hall (378.0 m ²)
Past events	<p>2014 99th Kiwanis International Convention</p> <p>Used for VIP reception including cocktail party and museum tour</p>



“Mihamaen” Japanese garden

Mihamaen is a 1.6 hectare Japanese garden where Japanese and foreign visitors alike can familiarize themselves with traditional Japanese culture. As an expression of traditional Japanese culture that visitors could interact with, the garden was built in a style known as “chisen kaiyu shiki,” which is characterized by a winding path that takes visitors around a pond, and was designed to symbolize mountain, river, sea, and forest. As you stroll around the pond, you can enjoy the seasonal beauty of nature. The elaborate garden design includes a dock, a beach, a peninsula, an island, and a bridge in the lower pond, as well as arbors, hilly areas, and walking paths.



Address	2-116 Hibino, Mihama-ku, Chiba City
Access	10-minute walk from the South Entrance of Kaihimakuhari Station on the JR Keiyo Line
Website URL	http://www.seibu-la.co.jp/makuhari/
Hours	Mihamaen 8:00-17:00 Matcha service: 9:00-16:30 Note: Tickets can be purchased up to 30 minutes before closing time.
Facility outline	Mihamaen and lawn area: 400 m ² (50 people seated, 100 people standing) Entire garden: 16,000 m ²
Remarks	<ul style="list-style-type: none"> - Shoraitei is roofed. Other structures are not roofed. - The garden is not usually illuminated at night. - Toilet facilities and parking for people with disabilities are available. A ramp and seats for wheelchair users are available. Service dogs are permitted. The entire venue is non-smoking. - Eating and drinking in the garden is prohibited (in principle). <p>Note: To apply to use the teahouse, call six months prior to the desired date. Applicants must submit an application form, as well as a list of required tea ware, if applicable, no later than seven days before the venue hire date.</p>
Past events	2014 99th Kiwanis International Conference Tea party at Shoraitei 2015 20th Asia South Pacific Design Automation Conference (ASP-DAC 2015) Tea party at Shoraitei





Chibaminato harbor area

Chibaminato Pier (Chiba Central Port's passenger ship pier) has been developed together with the K's Harbor (passenger terminal) commercial facility as part of Chiba Port Park, where visitors can enjoy a green seaside environment. You can use three facilities (PIER-01, Ocean Table, and Amandan Sail) near the pier and the green space in front of the bay in an integrated manner to hold various types of large-scale outdoor events.

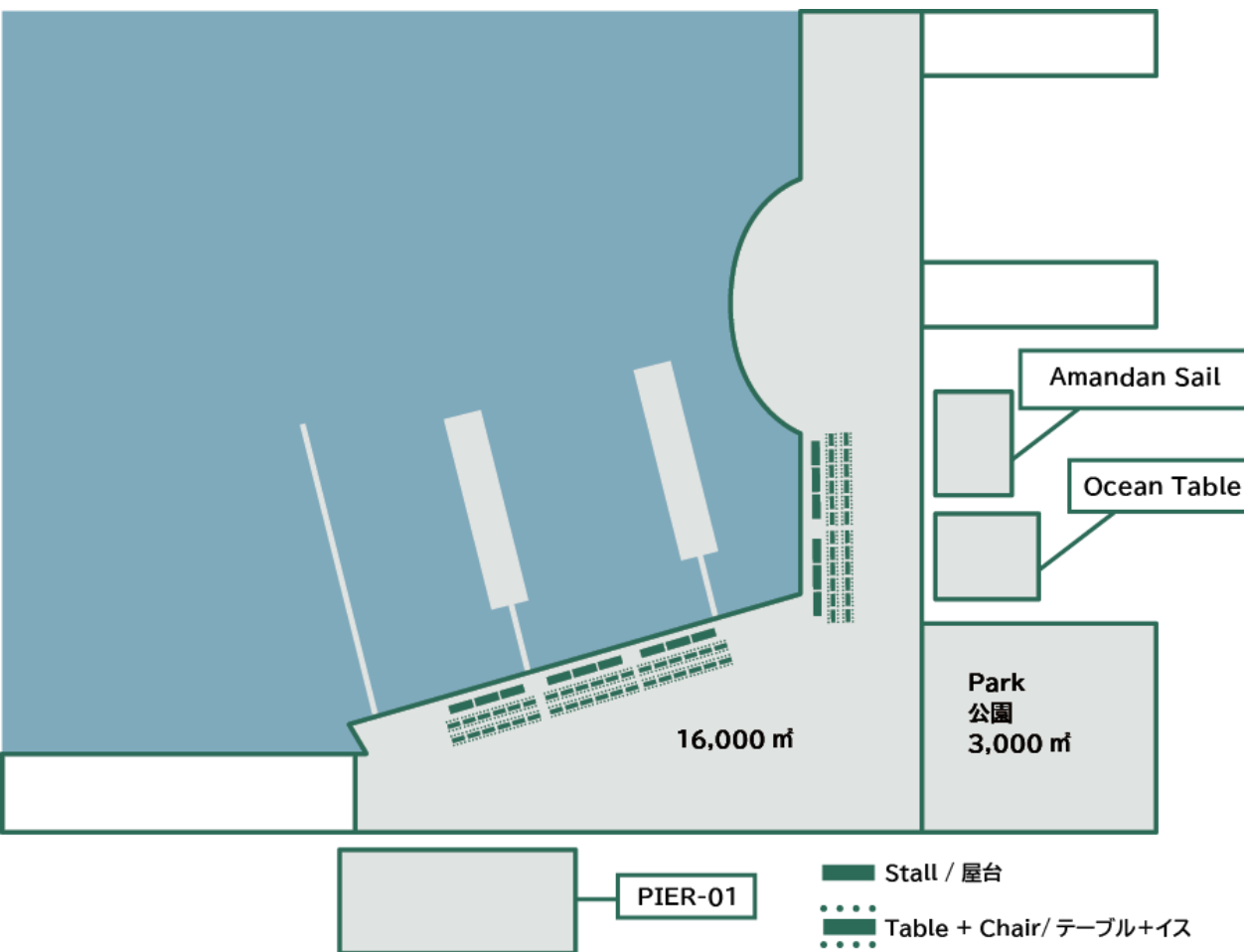


Amandan Sail



PIER-01

Ocean Table



Address	Chuoko, Chuo-ku, Chiba City
Access	5-minute walk from Chibaminato Station on the JR Keiyo Line
Website URL	Amandan Sail https://restaurant.novarese.jp/asl/mice/ Ocean Table/Pier-01 https://ksnetwork.com/chain/
Hours	Amandan Sail 11:00–19:00 Saturdays, Sundays, and holidays 11:00–20:00 Closed Tuesdays and Wednesdays (except holidays) Ocean Table 10:00–23:00 Pier-01 11:00–24:00 open 365 days a year
Facility outline	Around Chiba Central Port (incl. park) 19,000 m² Amandan Sail 406 m² (270 people standing) Ocean Table (300 people standing) Pier-01 260 m² (300 people standing)
Remarks	As per the Chiba City Urban Park Ordinance Enforcement Regulations, an application must be submitted for uses outside permitted purposes.

Chiba City Folk Museum (Chiba Castle)

The Chiba City Folk Museum (Chiba Castle) was built on the site of Chiba Castle (also known as Inohana Castle), a residence of the Chiba warrior clan, which was active in Shimousa province from ancient times to the Middle Ages. Activities of the museum include displaying and researching materials related to the Chiba clan. Enjoy the views from the observation room on the top floor. Adjacent facilities include a tearoom where you can also enjoy tea and sweets and a teahouse where you can enjoy a view of the garden.

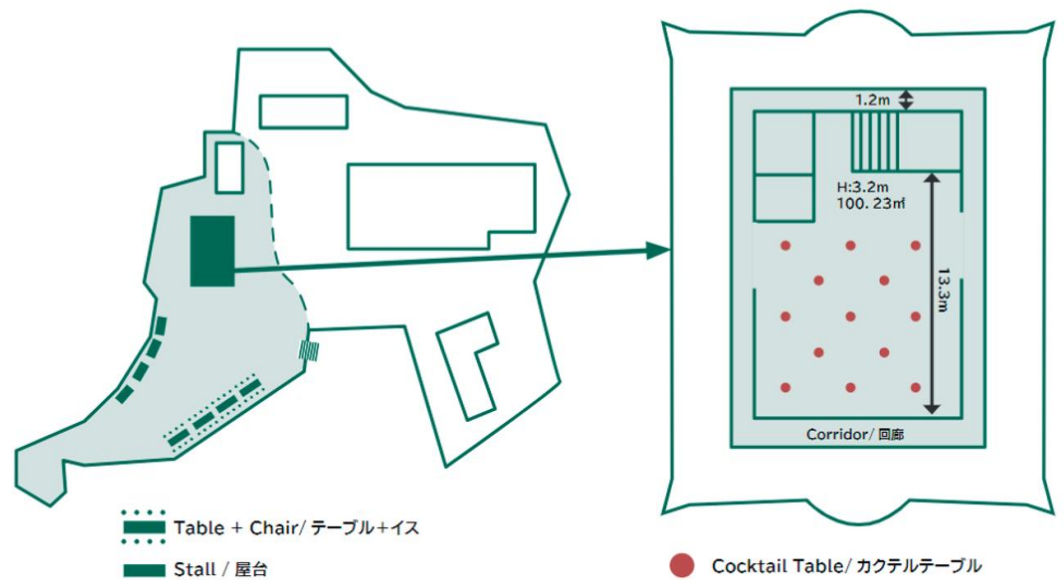


Address	1-6-1 Inohana, Chuo-ku, Chiba City 260-0856
Access	40 minutes by car from Narita Airport; 60 minutes by car from Haneda Airport; 40 minutes by train from Tokyo Station
Website URL	https://www.city.chiba.jp/kyodo/
Hours	9:00–17:00 (Consult on use on holidays and at night) Closed Mondays* and year-end and New Year holidays (December 29 to January 3) Note: If Monday falls on a holiday, closed on the following day.
Facility outline	Main building: steel-framed reinforced concrete (4-level 5-story castle structure); warehouse building: 1 aboveground and 2 underground floors Site area: 8,748.59 m ² ; building area: 756.13 m ² ; total floor area: 2,416.29 m ² ; total exhibition floor area: 1,230.86 m ²
Available area (m ²) / Capacity	Chiba City Folk Museum Observation Room: 100.23 m ² (up to 50 people) Inohana Park: 10.293 m ² (Strict limitations on use of the park by commercial operators)



Inohana Park
亥鼻公園

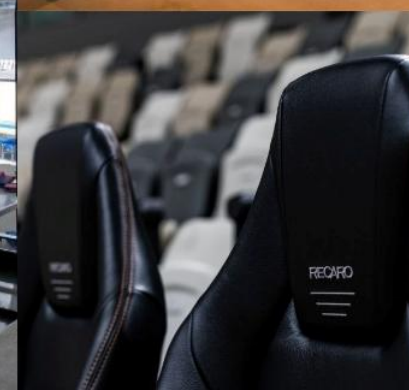
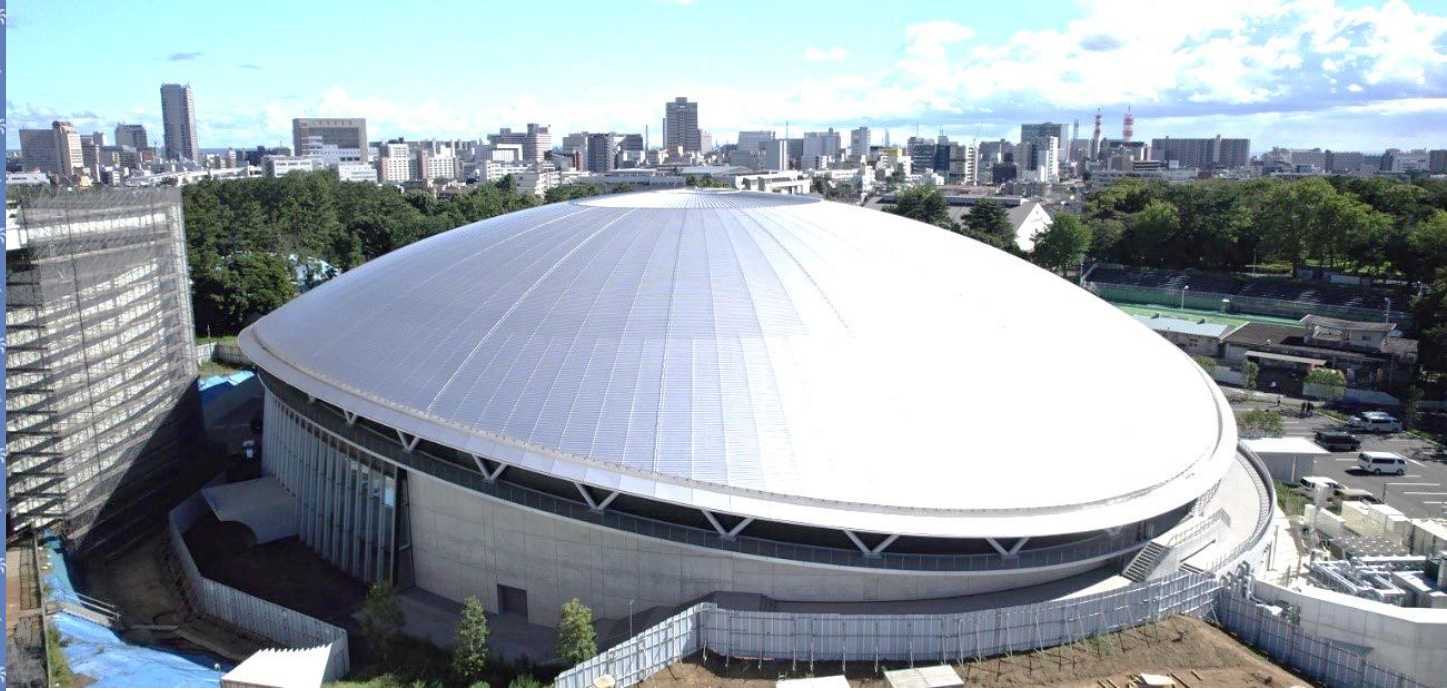
10,293 m²



TIPSTAR DOME CHIBA

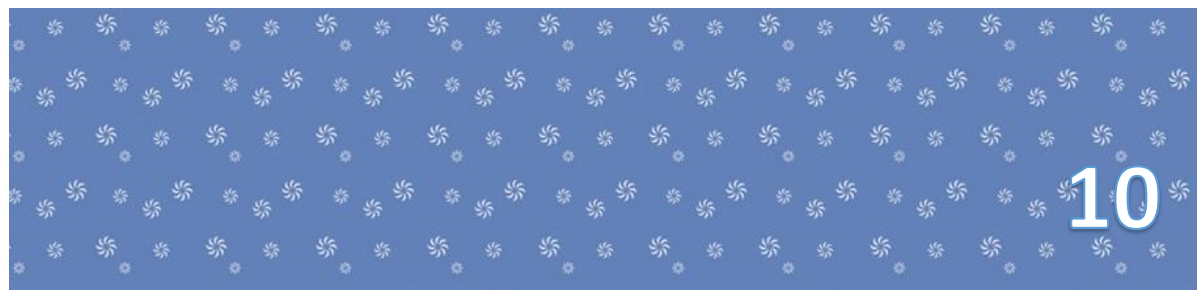
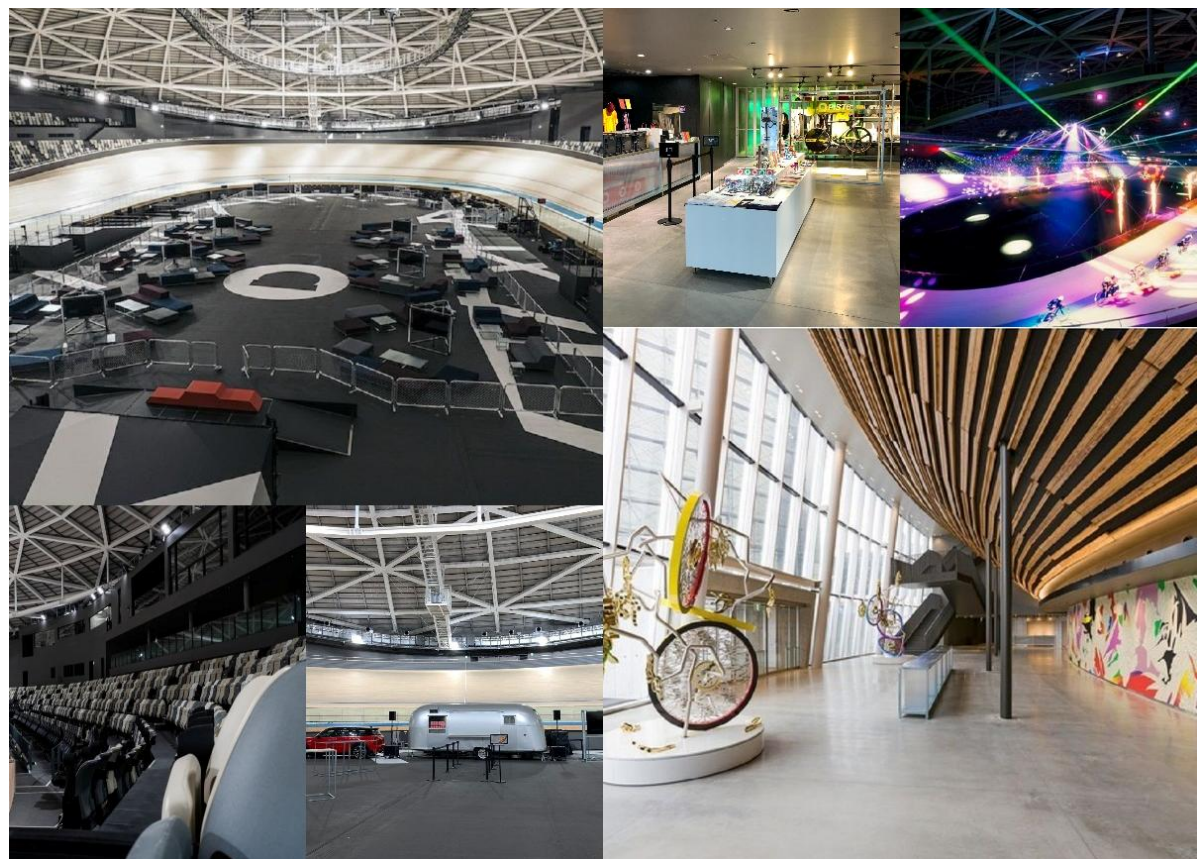
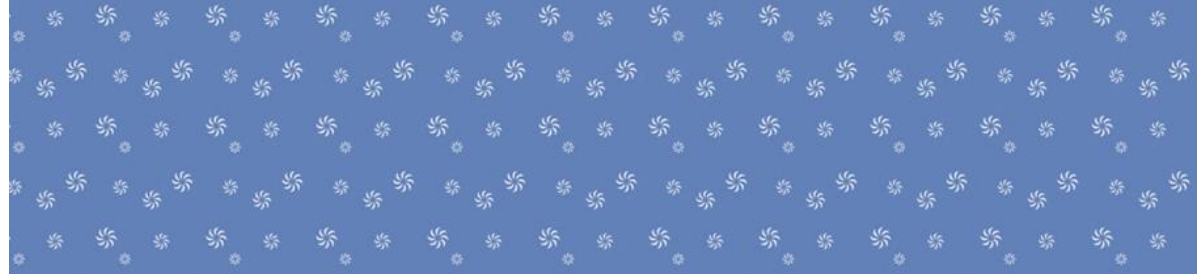
TIPSTAR DOME CHIBA, opened in October 2021 at the site of the Chiba Bicycle Racetrack is a world-class velodrome with a 250-meter wooden bank.

Facilities include arena seats, VIP rooms, three food areas including a bar. This venue allows unique stage settings using cutting-edge audio and lighting equipment, next-generation visual equipment, and laser lighting, etc. making it suitable not only for bicycle races but also for other sporting events, music events, and MICE events.



Photographs provided by Chiba City

Address	4-1-1 Benten, Chuo-ku, Chiba City 260-0045
Access	40 minutes by car from Narita Airport; 80 minutes by car from Haneda Airport; 60 minutes by train from Tokyo Station
Hours	9:00-22:00 Regular holidays are irregular
Facility outline	Building: 1 underground and 4 aboveground floors, 27.2 m in height Ceiling: Ring shell (single-layer string dome) Building area: about 9,600 m ² Total area: about 14,300 m ² No. of seats: about 2,000
Usage fee	Exclusive usage available (Ask for details)
Equipment	Monitor screen, lighting
Capacity	Up to 3,600 people ※requires coordination with relevant agencies
Catering	Catering service providers are not designated; to be arranged separately. When using facilities inside the dome, providers are designated.
Application for use	Accepted 1 month in advance. Consult if applying before that date.
Available area	Arena: 2,500 m ² (up to 1,600 people) Audience seats: about 2,000 (VIP seats: 58) 3 VIP rooms





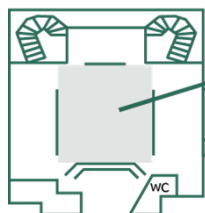
Naritasan Museum of Calligraphy

Opened in 1992, the Naritasan Museum of Calligraphy is a comprehensive museum dedicated to calligraphy that holds around seven rotating exhibitions each year. Its collection of 6,000 items ranges from delicate “kohitsu” (old writings) and “koshakyo” (early sutra copies) dating back to the Heian and Nara periods to large and dynamic contemporary calligraphic works. The museum plans exhibitions on different themes to broadly share the appeal of calligraphy. Visitors to the museum can expect to find something new every time they go.

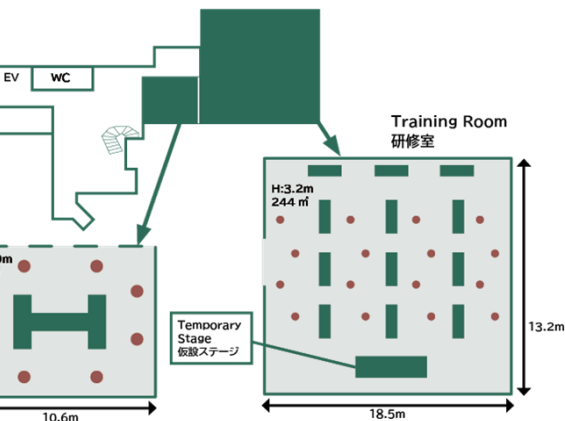
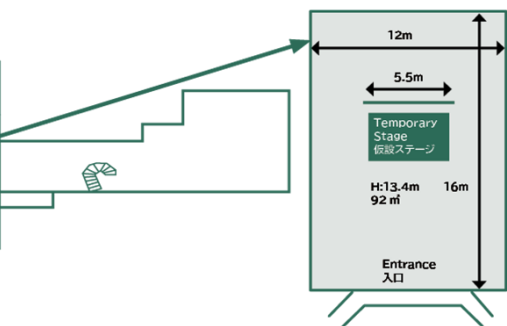
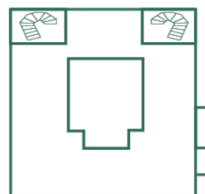
With its massive exterior and spacious, high-ceilinged interior, the museum was built to a temple-inspired design, putting it in perfect harmony with the local architecture and surrounding nature. It was designed by Kosugi Hideo, disciple of Yoshida Isoya, who was a leading architect during the Showa period. Upon entering the museum building, your eyes are immediately caught by a 13-meter-high ink impression called Rubbing of the Stone Stele’s Inscription of Taishan, exhibited in the 20-meter high Central Hall. The scale of the work, which was reportedly written by Emperor Xuanzong of the Tang Dynasty, is something to experience.

1F

Central Hall
中央ホール



2F



Address

640 Narita, Narita City 286-0023

Access

About 25 minutes by foot, or 5 minutes by taxi from Narita Station on the Keisei Line or JR Line; about 20 minutes by taxi from Narita Airport; about 15 minutes by car from the Tomisato IC; or 10 minutes from the Narita IC of the Higashi-Kanto Expressway.

Website URL

<https://www.naritashodo.jp/>

Hours

9:00–16:00

Closed Mondays (if Monday falls on a holiday, closed on the following day), during the preparation period for the next exhibition, and at year-end

Facility outline

Total floor area: 3,838 m²; building: steel, partly reinforced concrete, 2 aboveground floors

Barrier-free (wheelchairs are available)

Elevator is available.

Available area (m²) /
Capacity

2F: Lounge, Exhibition Room and Special Exhibition Room, Training Room (about 200 people/244 m², Conference Room (about 30 people/64 m²)

1F: Museum Shop, Central Hall (about 300 people/350 m²), Sekishoan tearoom (separate building)

Facility use is not approved when:

- The use may violate public policy.
- The use is for commercial purposes.
- The use may damage the facilities or equipment.
- The use is for political purposes or a religious activity.

Use may be cancelled, suspended, or limited even after approval when:

- The use is found to be for a purpose other than the declared purpose.
- The instructions of museum personnel are not followed.
- It is deemed necessary due to a disaster or other reasons.

Remark

Instructions for use

- Refrain from drinking alcohol, smoking, and using fire
- Do not disturb others with noise, ruckus, etc.
- Eating is allowed in the Conference Room and Training Room, only
- The museum premises have been used for outdoor events (partly roofed).

Past events

2017 10th Asia Pacific Conference on Speech, Language and Hearing
2021 MICE Hospitality Lecture
Live calligraphy performance and experience after the lecture

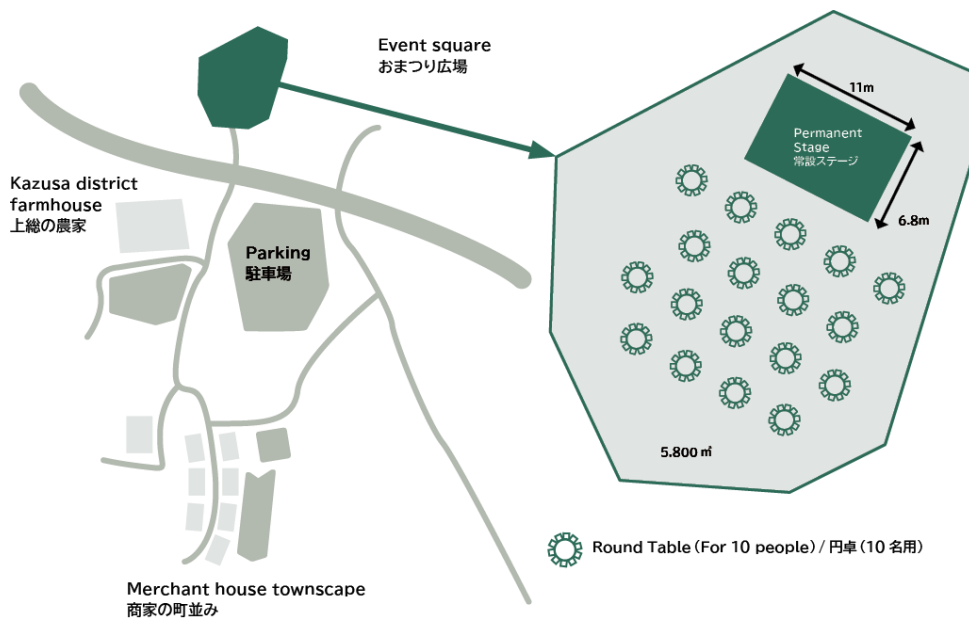
12





Chiba Prefectural Open-Air Museum Boso-no-Mura

This history museum aims to allow visitors to experience traditional lifestyles and crafts native to the Boso region and learn about history through the exhibition of archaeological antiquities from across the prefecture as well as the houses of samurai, merchants, and farmers. Visit Boso to deepen your understanding of traditional culture using all five senses. A unique venue where you can enjoy village streets and a town square set amid the rich natural environment near Narita Airport.



Address	1028 Ryukakuji, Sakae-machi, Inba-gun
Access	From JR Narita Station, about 20 minutes by bus and 10 minutes on foot from the bus stop From Narita Airport, about 20 minutes by car From Makuhari Messe, about 40 minutes by car
Website URL	http://www2.chiba-muse.or.jp/MURA/
Hours	9:00–16:30 Note: Closed Mondays and year-end and New Year holidays (If Monday falls on a holiday, closed on the following day.)
Facility outline	Site area: about 51 ha (504,923 m ²) Building: 78 buildings m ² (1 Fudoki-no-Oka Museum building, 3 cultural asset buildings, 24 reproduced buildings, 50 other buildings), total of about 8,862.68 m ² Merchant House Townscape (up to canal): 1,150 m ² Event Square: 5,800 m ²
Available area (m ²) / Capacity	Former main hall of Gakushuin Primary School (incl. waiting room): 655 m ² Square in front of main hall: 2,565 m ²
Remark	- Not roofed in principle. - Consult on the use of fire. - Partly illuminated at night. - Wheelchairs and baby strollers are available; 7 toilets for people with disabilities.
Other	[List of hands-on experiences] Baking rice crackers, making brown rice tea, making futomaki sushi rolls, making soba noodles, making hard caramel candy, making papier-mache, making Japanese candles, making bamboo crafts, making half-soled straw sandals
Past events	1992 AIPPI (International Association for the Protection of Intellectual Property) 35th Tokyo Conference spouse program

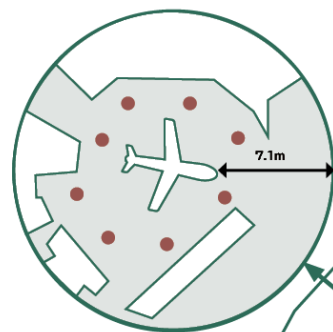


Museum of Aeronautical Sciences

Japan's first museum dedicated to civil aviation exhibits real aircraft and engines. Visitors can also enjoy a flight simulator experience. From the observation room on the fifth floor, you can get a close-up view of planes taking off and landing at the adjacent Narita International Airport.

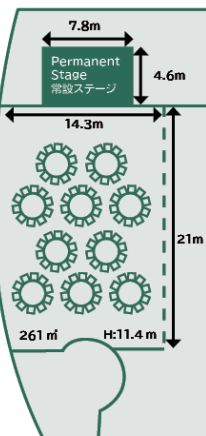
Address	111-3 Iwayama, Shibayama-machi, Sanbu-gun 289-1608
Access	About 90 minutes from downtown Tokyo About 15 minutes by car from Narita Airport
Website URL	http://www.aeromuseum.or.jp/index.html
Hours	10:00-17:00 (last entry at 16:30) Note: Closed Mondays (if Monday falls on a holiday, closed on the following day) and year-end (December 29 to 31)
Facility outline	Main Building: 5 stories Experience Hall: 2 stories Elevators are available in the Main Building and Experience Hall. (Stairs only at the Main Building 3rd-floor observatory.)
Available area (m ²) / Capacity	Main Building 1F Multipurpose Hall: 30 people/95 m ² West Wing Exhibition Room: 100 people/300 m ² Experience Hall: 200 people/261 m ² Main Building 4F restaurant: 40 people/124 m ² Main Building 5F observation room: 80 people/193 m ² Note: The given number of people is capacity for standing buffet.
Remark	Use during operating hours should be within a scope that does not disturb other visitors or disrupt experience program operations. Prohibited activities: damaging facilities, equipment, and displayed items; disturbing other visitors; violating public policy; bringing in fire, dangerous materials, or liquid materials. Eating and drinking in the exhibition space is allowed if the floor is covered with protective materials.
Other	Consult on renting the museum. To use Inohana Park, consult the Parks and Greenery Division.

Main Building West Wing Exhibition Room
本館西棟展示室



Multipurpose Hall/ 多目的ホール
Restaurant/ レストラン
Observatory/ 展望室

Experience Hall
体験ホール



Museum of Aeronautical Sciences
航空科学博物館

Outdoor
Exhibition
Space
野外展示場

Parking
駐車場

- Cocktail Table/ カクテルテーブル
- Round Table (For 10 people) / 円卓 (10名用)
- - - Movable wall/ 可動壁





Yatsurugi Hachiman Shrine

Yatsurugi Hachiman Shrine, which deifies four gods, including Yamato Takeru no Mikoto, and one goddess, is beloved by locals as the guardian shrine of Kisarazu. In establishing the Kamakura Shogunate, Minamoto no Yoritomo donated the land for the construction of the shrine. In 1591, Tokugawa Ieyasu bestowed on the shrine 3.2 koku (land units) of land.

During the Siege of Osaka in 1614, boatmen from Kisarazu played a remarkable role that contributed to the win. Ieyasu attributed this to the help of the shrine and donated a bronze bird to it in response. Cultural assets of the shrine include a total of 162 pieces of decorative painting created with an authentic technique of the Kano School, which was supported by the Tokugawa Shogunate, on the lattice ceiling of the front shrine. The big portable shrine created in 1850 is described as the largest portable shrine in the Kanto region.

This historic shrine rebuilt its old office to complete the Sanshuden building in 2018. The wooden boards used on the ridge-ends of the roof are designed to represent the faces of Yamato Takeru no Mikoto and his wife, Oto Tachibana Hime, who appear in the myth of “Kimisarazu,” after which Kisarazu is named. Sanshuden, which has a large hall and a meeting room, is available as a unique Japanese-style venue.



Address 1-6-15 Fujimi, Kisarazu City 292-0831

Access From Narita Airport about 1 hour by car
From Haneda Airport about 25 minutes by car
From Tokyo Station about 45 minutes by train

Website URL <http://www.yaturugi.net/>

Hours 9:00-17:00 No regular closing days
Note: Consult on renting for an event

Facility outline Wooden 1-story building
Entrance with “kara-hafu” roof and main building
in “irimoya” style with copper roofing
Quasi-fireproof building, total of about 869 m²

Available area (m²) / Capacity Large hall: 144 m² (Can be divided into two)
Room size: 8 m x 18 m

Capacity Up to 120 people (seated)



Porsche Experience Center Tokyo

At this, the world's ninth and Japan's first, Porsche Experience Center, everything you see and do brings you closer to the Porsche brand.

In a location that showcases the natural environment of Kisarazu and the beautiful landscape of Japan, the center comprises a building whose design was inspired by “Edo Kiriko,” a traditional Japanese cut-glass craft, along with a uniquely shaped 2.1 kilometer handling track that takes advantage of the site's geographical features. Experience various contents that will stimulate your intellect as well as all five senses.

Space is available for events of various scales held for diverse purposes, including events for special occasions, team building with business partners, surprise events for employees, and hospitality for driving-enthusiast customers. Driving programs provided using the cutting-edge facilities allow you to provide your guests with experiences that are not available anywhere else.

Address	1148-1 Nakanodai, Izushima, Kisarazu City 292-0034
Access	From Narita Airport, about 1 hour by car From Haneda Airport, about 30 minutes by car From Tokyo Station, about 45 minutes by train
Website URL	https://porsche-experiencecenter-tokyo.jp/
Hours	[Front desk] October to February: 7:3-17:00; March to September: 8:30-18:00 [Restaurant] 11:00–20:00 (last order 19:00) Note: Closed Sundays and Mondays. Consult on renting for an event.
Facility outline	Site area: 43 ha (business area: 13 ha) Building: 2 aboveground floors Track: 2.1 km
Available area (m ²) / Capacity	1st-floor atrium: 480 m ² ; room size: about 20 m x 22 m
Usage fee	Exclusive use of the venue available. Consult for details. Note: driving programs, simulator lab, food, equipment, etc. are also available
Equipment	Desks, chairs, projectors, screens, microphones, pointers
Capacity	200 people for standing buffet; up to 90 people for a one-day driving program
Catering	Cezars Kitchen KK is designated as a food service provider in PEC Tokyo.





UNIQUE VENUES



Chiba Convention Bureau and International Center (CCB-IC)

14F Makuhari Techno Garden Building D, 1-3 Nakase, Mihama-ku, Chiba City,
Chiba Japan 261-8501

Phone: 043-297-2751 <https://www.ccb.or.jp/mice/> Email: request@ccb.or.jp